

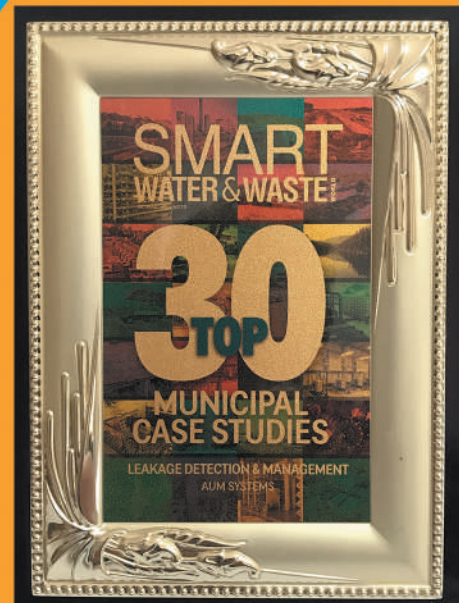


AUTOMATION & MAINTENANCE MANAGEMENT SYSTEMS

GLOBAL COMPETENCY, LOCAL AVAILABILITY



PEOPLE . TECHNOLOGY . SUSTAINABILITY



OUR CORE VALUES

Quality

Provide high quality, cost-effective services, engineered first-time right and strive continuously for improvements.

Integrity

Follow ethical work practices in all aspects of our work with customers, partners and suppliers.

Sustainability

Provide sustainable solutions for our customers, leveraging technology to improve environment monitoring, energy efficiency and asset management practices.

Safety

Provide a safe and healthy work environment in our offices and all work locations. All our staff receive appropriate levels of training on safe industry work practices, as appropriate for their work requirements.

OUR VISION

Provide cost-effective, high quality engineering solutions which will leverage technology and transform process data to management information, appropriate for modern day, sustainable asset management.



CONSULTANCY

OEM
SOLUTIONS

PERMANENT METERING
SYSTEMS, TELEMETRY &
AUTOMATION FOR WATER
& WASTEWATER

AUDITS & FLOW
STUDY SERVICES

OUR PERSPECTIVE

India needs accurate data for water infrastructure management and benchmarking. It has been our endeavour to meet this need with trained resources (international competency) in measurement and monitoring systems, to serve the water industry in our country. Competency in terms of permanent measurement systems and water/wastewater audit studies. Water industry knowledge is our strength.

CUSTOMERS PERSPECTIVE



Chairman
Dr. S V Balasubramaniam
Chairman,
Bannari Amman Group of Companies

Managing Trustee
Smt Vanitha Mohan
Chairman,
Pricol

Trustees
Sri Ravi Sam
Director,
LMW Group of Companies

Sri Kanakalal Abhaichand
Partner
TV & Brothers

Sri N V Nagasubramaniam
Senior Advocate

Dr R V Ramani
Managing Trustee
Sankara Eye Society

Sri CR Swaminathan
President
RAAC

21st Sept 2019

To
Mr. Prakash Muthuswamy
Managing Partner
Automation and Maintenance Management Systems (AuM)
No. 6, Third Floor, Sri Ram Apartments,
Avinashi Road, Papanayakan Palayam,
Coimbatore - 37

Dear Sir,

Greetings from Siruthuli!

We would like to express our sincere gratitude towards your support in calibrating the flow of sewage in the Irugur channel. Your technical support has enabled us to have a better understanding to develop a suitable methodology for treatment of wastewater.

It is the magnanimity of people like you that has enabled Siruthuli to make a difference to the environment in Coimbatore region.

While thanking you once again we look forward to your continued support and guidance in carrying our eco message to as many people as possible in the times ahead.

Let's together make Mother Earth smile!

Green Regards,

Vanitha Mohan
Managing Trustee

KITCO Ltd.

(Estd. in 1972 by IDBI & Govt. of Kerala)



Regd. Office: Femith's, P.B. No: 4407
Puthiya Road, NH Bypass
Vennala, Kochi 682 028, Kerala, India
Tel : +91-484-4129000 / 6129000
Fax : +91-484-2805066
E-mail: mail@kitco.in, Web: www.kitco.in

CIN : U74140KL1972GOI002425

TO WHOMSOEVER IT MAY CONCERN

KITCO was awarded for the work of "Technical Performance and Service Delivery Assessment of Ten (10) Multi Gram Panchayats Water Supply Schemes in the State of Kerala", by KRWSA, Thiruvananthapuram. As part of the project, M/s Automation and Maintenance Management (AuM) Systems, Near Lakshmi Mills Junction, Sree Ram Apartments, Avinashi Road, P.N.Palayam, Coimbatore-37 was engaged for the work of flow measurement using ultrasonic flow meters for selected points of 10 water supply schemes by KITCO.

The scope of the work of M/s Automation and Maintenance Management (AuM) Systems was continuous flow measurement of upto 15 locations at each scheme, for a period of 3 days with 18 packages.

The Services of M/s Automation and Maintenance Management (AuM) Systems were found to be very good

Jose Davis
Joint General Manager

Place : Kochi

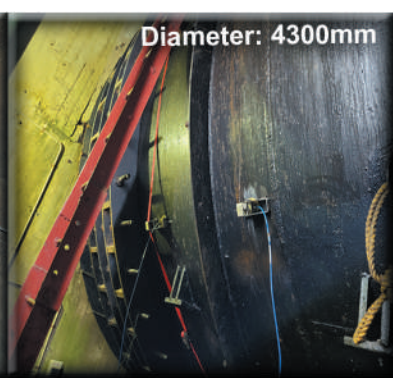
Date : 24/07/2018



PERMANENT METERING/SCADA SYSTEMS

We supply, install, test, commission and maintain flow measurement devices establishing permanent metering solutions for municipal systems, industries and other water/wastewater infrastructures. Water industry expertise enables us to understand client requirements and tailor cost effective solutions accordingly. City-wide installations have been done on different pipe materials even without shutting down water networks, by hot-tapping. We provide reliable, robust and high accuracy flow measurement systems. Metering solutions that cut across potable water, wastewater, treated sewage water, penstocks in hydroelectric power stations, open channels etc. SCADA systems bring appropriate data and analysis for efficient management and NRW reduction. Smart consumer metering, POS device interfaces and consumer billing software applications with higher level data and loss analysis solutions can be provided.

IF IT FLOWS, WE CAN MEASURE



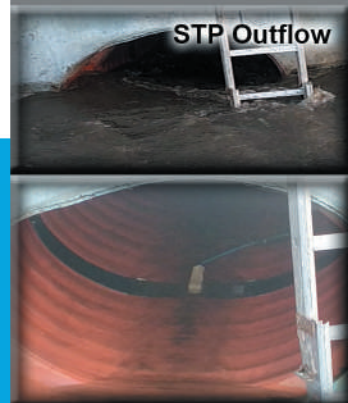
Penstock Monitoring - Clamp-on Sensors

Penstock Monitoring - Inside Pipe Wedge Sensors

Penstock Monitoring



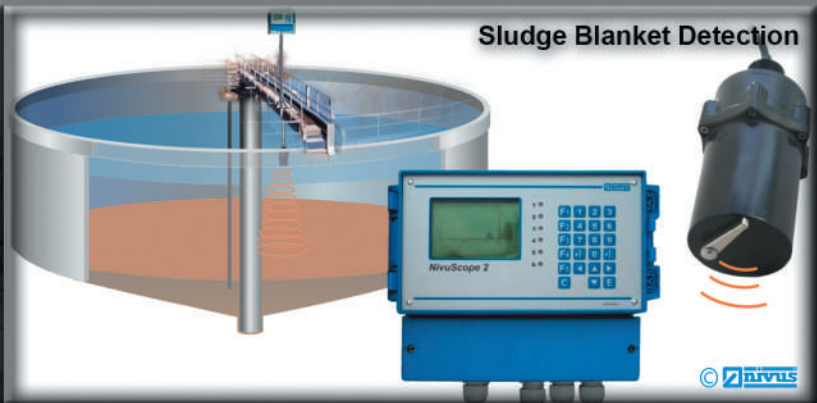
Hot-tapping Insertion Sensors - Multi Path



STP Outflow



Single Point Insertion CCR Sensor replacing Mag Meter



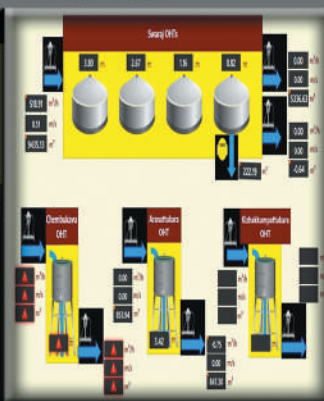
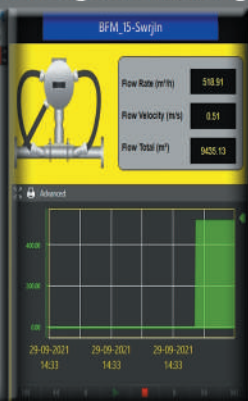
Sludge Blanket Detection

Treatment Plant Monitoring Solutions



Canal and River Discharge Monitoring - Radar Meter

Contact Type CCR Sensor



City-Wide Water Network Management Through SCADA

Billing Software , POS App & Mobile Access



AUDITS & FLOW STUDY SERVICES

Flow, pressure and quality studies are provided. We provide flow measurement audit services, using certified meters, for Municipalities and Industries to account for losses and provide further insights into existing water network performance. We provide performance verification services for existing flow meters. We are able to measure both water and wastewater applications in different pipe sizes under partially filled or fully filled conditions as well as in open channels, canals and rivers. Upto 20 concurrent measurements have been done across multiple days. Studies have helped identifying network losses in excess of 50% in some cases. More than 70 municipal water networks, identifying problematic areas, have been served well by our audits. Industries such as refineries, breweries, pulp & paper, food, pharmaceutical and other manufacturing industries have benefitted from our services. Our vast experience in treatment plant (water & wastewater) monitoring and performance capacity assessments, serve existing plants and infrastructure planning. We carryout flow studies for city-wide wastewater drainage systems, including outfalls and river discharges.

MEASURE BETTER TO MANAGE BETTER

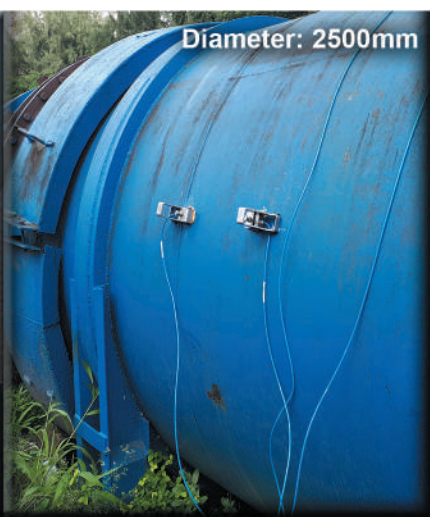
120 Year Old
CI Pipe



GRP Pipe



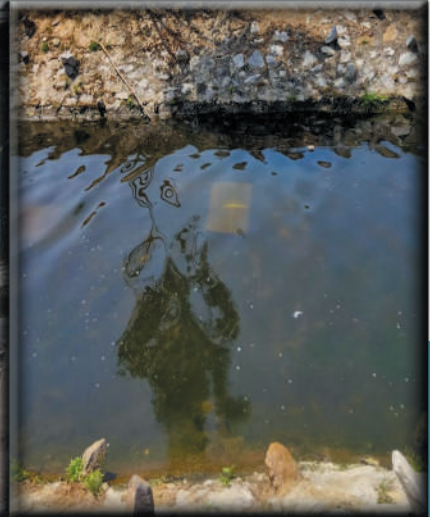
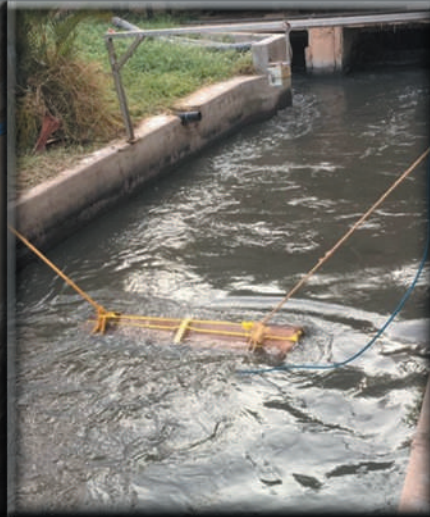
Diameter: 2500mm



DI Pipe
Diameter: 1620mm



For Industries & Municipalities



Losses Monitored

For Treated Sewage Effluent



Wastewater Flow Studies

Solar
Powered
Transmitter



River Flow Assessment Studies



OEM SOLUTIONS

We meet modern day treatment plants requirements to integrate with appropriate levels of metering and SCADA systems. High levels of automation could be provided to make plants energy efficient. Plant performance assessments could be online and continuous. OEMs installing and operating multiple treatment plants would benefit hugely, with integrated performance monitoring platforms. There is a need to standardize metering so that non-contact measurement are maximized for durability and also to minimize inventory. RO plant drains cause a drain in revenue and hence we meet the need for reliable inlet, permeate and drain measurements that optimize plant efficiency. With our industry expertise, we bring plant optimization deploying modern-day systems.

CONSULTANCY

Consultancy services for instrumentation design, metering concepts, functional design documentation, drawings, design of IoT & SCADA systems and Management Information Systems to analyse performance and facilitate improvement. Skilled resources in metering and automation systems for infrastructure contractors. Selection of appropriate cost effective metering technologies. Identifying area-wise metering locations for city networks. Developing metering concepts for existing old water networks. Audits and flow measurement services as subconsultancy for water and wastewater systems. We help clients to identify losses and benchmark existing systems. Performance of existing metering systems can be reviewed and recommendations made for replacement and recalibration. We also provide the required calibration services.

ACCURATE DATA TO YOUR DESK



Water Metering at Power Stations



Plant Inlet Permeate and Drain Measurement



AUM SYSTEMS
Smart Metering Solutions

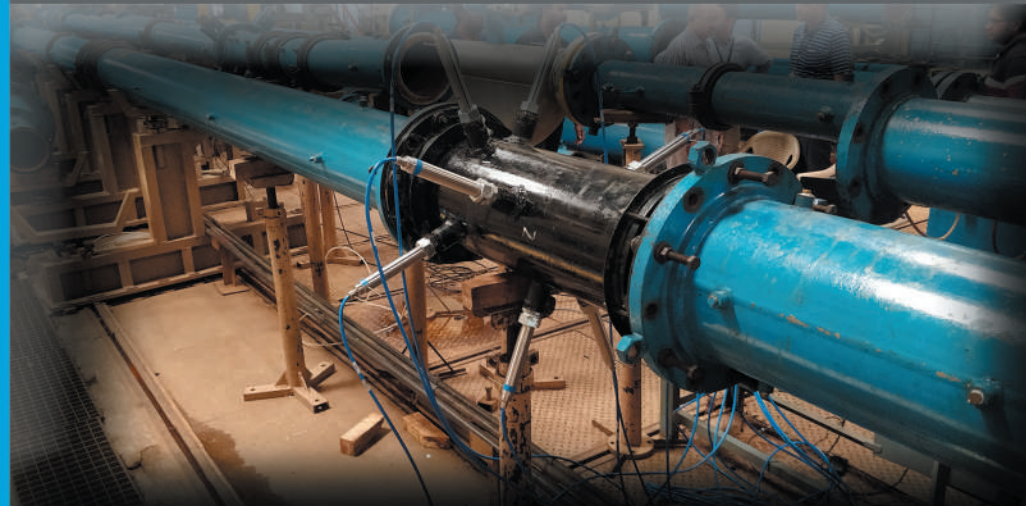
PALLAVARAM FLOWMETER

FLOW TOTAL (m ³)	
1:00 AM - 0	1:00 PM - 0
2:00 AM - 0	2:00 PM - 0
3:00 AM - 0	3:00 PM - 0
4:00 AM - 0	4:00 PM - 0
5:00 AM - 0	5:00 PM - 0
6:00 AM - 0	6:00 PM - 0
7:00 AM - 394.6	7:00 PM - 0
8:00 AM - 668.28	8:00 PM - 0
9:00 AM - 1488.69	9:00 PM - 0
10:00 AM - 2319.98	10:00 PM - 0
11:00 AM - 3422.77	11:00 PM - 0
12:00 PM - 0	12:00 AM - 0

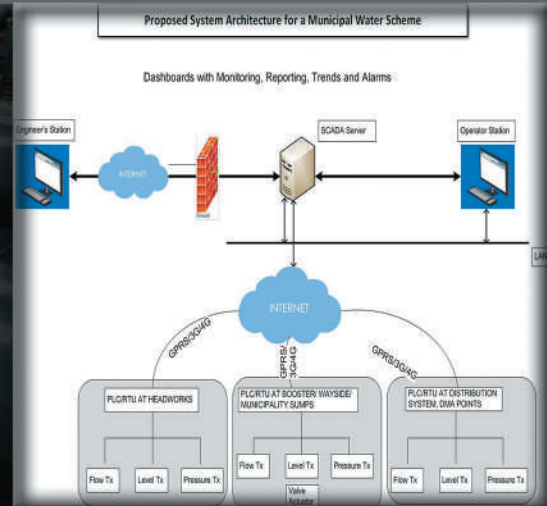
FLOW RATE (m³/h): 230.5

FLOW TOTALIZER (m³): 3953.5

Single Sensor at STP Inlet



Calibration Services



IoT, SCADA and MIS

OUR PARTNERS



www.nivus.com

Made
in
Germany

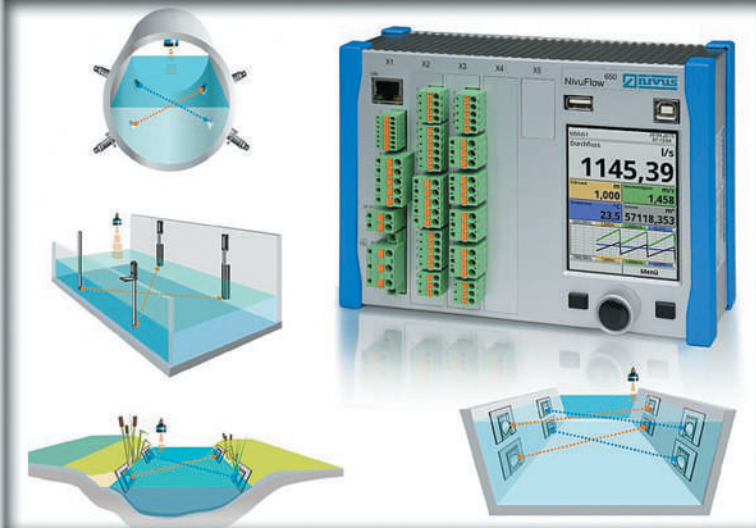
Nivus GmbH is a leading developer, manufacturer and supplier of measurement instruments for the water industry with over 50 years of quality, experience, service and competence.



www.blue-siren.com

Blue Siren Inc. designs, develops and manufactures low power wireless data collection machines, sensors, and optical devices. Blue Siren technology is used to set up remote monitoring networks for environmental studies, security, transportation, energy and government. A young innovative company with over 20 years experience. Blue Siren products are made in the Melbourne Florida USA.

ENGINEERED SOLUTIONS FOR INDUSTRY CHALLENGES



Nivus Products

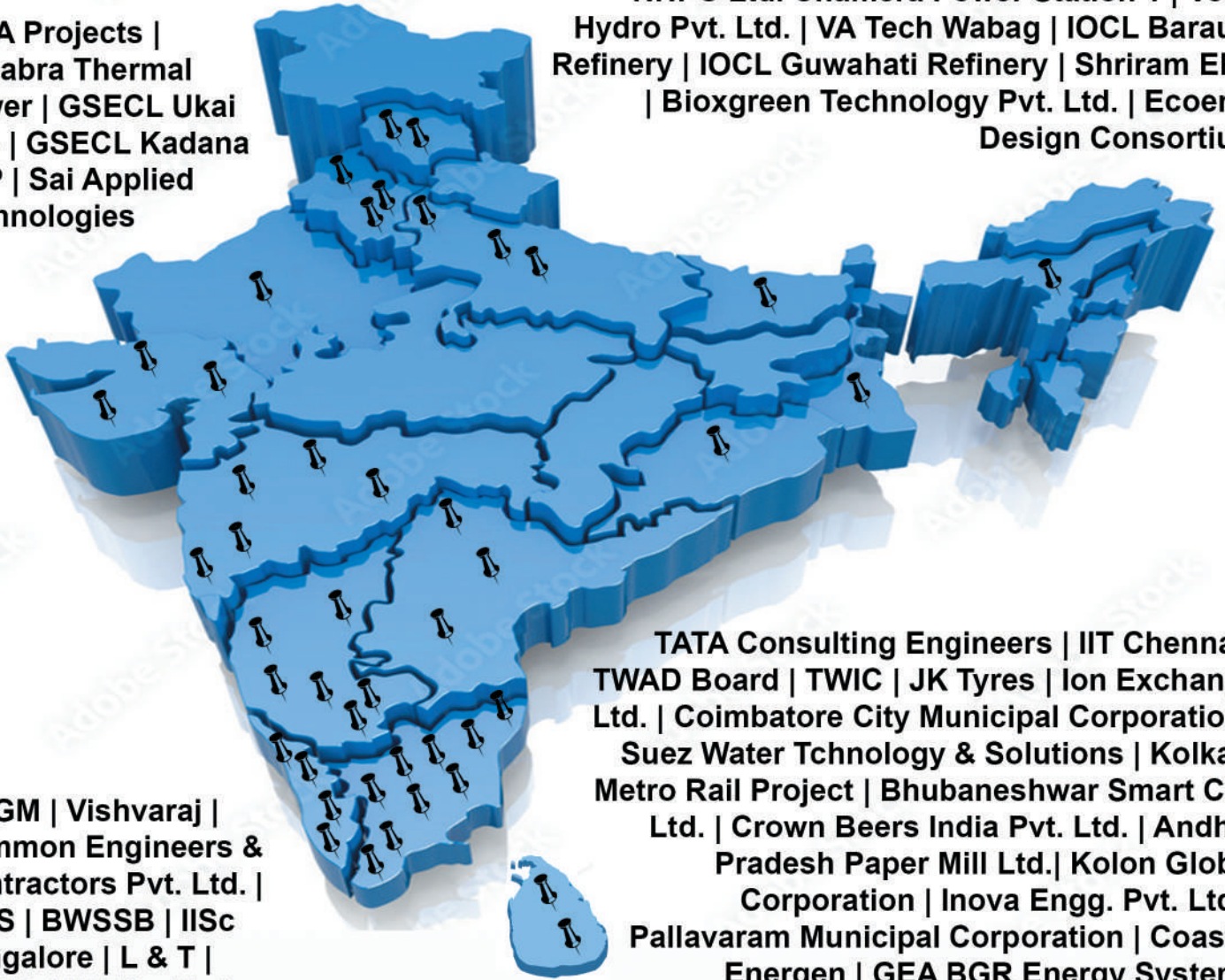


Blue-Siren Products

KEY CLIENTS

TATA Projects |
Chhabra Thermal
Power | GSECL Ukai
TPS | GSECL Kadana
HEP | Sai Applied
Technologies

NHPC Ltd. Chamera Power Station 1 | Voith
Hydro Pvt. Ltd. | VA Tech Wabag | IOCL Barauni
Refinery | IOCL Guwahati Refinery | Shriram EPC
| Bioxgreen Technology Pvt. Ltd. | Ecoenix
Design Consortium



MCGM | Vishvaraj |
Gammon Engineers &
Contractors Pvt. Ltd. |
SIAS | BWSSB | IISc
Bangalore | L & T |
KITCO | ULTS - Thrissur
Municipal Corporation

TATA Consulting Engineers | IIT Chennai |
TWAD Board | TWIC | JK Tyres | Ion Exchange
Ltd. | Coimbatore City Municipal Corporation |
Suez Water Tchnology & Solutions | Kolkata
Metro Rail Project | Bhubaneswar Smart City
Ltd. | Crown Beers India Pvt. Ltd. | Andhra
Pradesh Paper Mill Ltd. | Kolon Global
Corporation | Inova Engg. Pvt. Ltd. |
Pallavaram Municipal Corporation | Coastal
Energen | GEA BGR Energy Systems

Our Offices

- 📍 Coimbatore, Tamil-Nadu
- 📍 Mumbai, Maharashtra

Automation & Maintenance Management Systems

68-A, School Road, Krishnaswamy Nagar, Ramanathapuram,
Coimbatore-45

Ph: +91 422 2221988, Email: info@aumsystems.com